

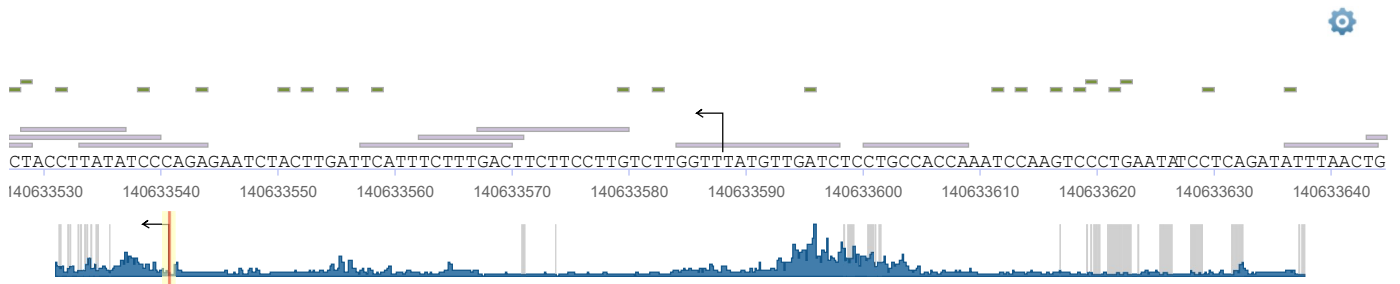
**Promoter Information** [what is this?](#)

**General information about the promoter**

- Gene** : Best supported promoter for Human [CD14](#)
- Synonyms** : CD14 molecule, CD14, CD14 antigen
- Genomic coordinates** : Build hg38/GRCh38: Chr5:140632588..140643588 -
- Virtual TSS score** : 25 (100%)

**Sequence View** [what is this?](#)

Sequence [FASTA](#) ↓



Viewing nucleotides 140633527 to 140633645,  shows regions of conservation between placental species

**Displayed features:**

<input type="checkbox"/> ChIP intervals	<input checked="" type="checkbox"/> TRANSFAC experimental binding site <a href="#">(filter)</a>	<input type="checkbox"/> DNase hypersensitivity sites <a href="#">(filter)</a>	<input checked="" type="checkbox"/> SNP <a href="#">(filter)</a>
<input checked="" type="checkbox"/> Predicted transcription factor binding site <a href="#">(filter)</a>	<input type="checkbox"/> Histone intervals	<input checked="" type="checkbox"/> Repeat <a href="#">(filter)</a>	<input checked="" type="checkbox"/> TSS <a href="#">(filter)</a>
<input checked="" type="checkbox"/> CpG island <a href="#">(filter)</a>			

**Features** [what is this?](#)

**Features of the promoter**

Histone modifications (104 entries) [.bed coordinates](#) ↓

Show  entries Search:

Histone modification	Cell	Start Position	End Position	Biological role	PMID
H2AZ	CD4+ T cells	140632522	140632622		<a href="#">19014516</a>
H2AZ	CD4+ T cells	140632812	140632892		<a href="#">19014516</a>
H2AZ	CD4+ T cells	140632972	140633092		<a href="#">19014516</a>
H2AZ	CD4+ T cells	140633192	140633302		<a href="#">19014516</a>
H2AZ	CD4+ T cells	140633382	140633472		<a href="#">19014516</a>

Showing 1 to 5 of 104 entries [First](#) [Previous](#) [1](#) [2](#) [3](#) [4](#) [5](#) [Next](#) [Last](#)

ChIP fragments (2928 entries) [.bed coordinates](#) ↓

Show  entries Search:

Factor	Start Position	End Position	Reference	Cell source
ADNP	140635037	140635356	<a href="#">22955616</a> <a href="#">ENCODE</a>	HepG2

aff4	140639997	140640168	<a href="#">GEO ↗</a>	HeLa + DOX + EGF
aff4	140639135	140639857	<a href="#">GEO ↗</a>	HeLa + DOX + EGF
aff4	140639413	140640035	<a href="#">GEO ↗</a>	HeLa

Showing 1 to 5 of 2,928 entries

First Previous 1 2 3 4 5 Next Last

**TRANSFAC experimental binding sites (8 entries)** [.bed coordinates ↓](#)

Show 5 entries Search:

Binding Factor(s)	Binding Site	Start Position	End Position
	R29453	140633194	140633216
C/EBPalpha(h), C/EBPbeta(h), C/EBPalpha(h):C/EBPbeta(h), C/EBPdelta(h)	R29444	140633287	140633317
CREB1(h)	R28673	140633234	140633252
GKLF(h)	R35476	140633442	140633456
MZF-1(h)	R28567	140633243	140633252

Showing 1 to 5 of 8 entries

First Previous 1 2 Next Last ⚙

**TSS associated with the promoter (5 entries)** [.bed coordinates ↓](#)

Show 5 entries Search:

Source	Nucleotide Position
Ensembl	140633175
Ensembl	140633651
Ensembl	140633672
Ensembl	140633700
Ensembl	140633701

Showing 1 to 5 of 5 entries

First Previous 1 Next Last

**SNPs (2477 entries)** [.bed coordinates ↓](#)

Show 5 entries Search:

Source	Identifier	Strand	Nucleotide Change	Nucleotide Position
dbSNP	<a href="#">rs754397116 ↗</a>	+	C/T	140632588
dbSNP	<a href="#">rs1397135781 ↗</a>	+	A/G	140632589
dbSNP	<a href="#">rs757783435 ↗</a>	+	T/C	140632590
dbSNP	<a href="#">rs372715155 ↗</a>	+	G/A	140632591
dbSNP	<a href="#">rs1264820880 ↗</a>	+	G/C	140632592

Showing 1 to 5 of 2,477 entries

First Previous 1 2 3 4 5 Next Last

**Repeats (11 entries)** [.bed coordinates ↓](#)

Show 5 entries Search:

Name	First Position	Last Position
AluSg	140640399	140640696
AluSg7	140633782	140634086
AluSp	140634785	140635080
AluSp	140635987	140636297
AluSp	140636017	140636297

Showing 1 to 5 of 11 entries

First Previous 1 2 3 Next Last

**CpG islands (2 entries)** [.bed coordinates ↓](#)

Show 5 entries Search:

Start Position	End Position	% GC Content	Count of CpGs	Observed to Expected Ratio of CpGs
140631707	140633284	60	104	0.7
140638946	140640096	60	73	0.7

Show 5 entries

Tissue or Cell Type	Start Position	End Position	Reference
astrocytes - normal human astrocytes	140632496	140632645	<a href="#">ENCODE</a>
astrocytes - normal human astrocytes	140639356	140639505	<a href="#">ENCODE</a>
astrocytes - normal human astrocytes	140642776	140642925	<a href="#">ENCODE</a>
chorion	140633136	140633614	<a href="#">ENCODE</a>
chorion	140639036	140639930	<a href="#">ENCODE</a>

Showing 1 to 5 of 63 entries

First Previous 1 2 3 4 5 Next Last

Match predicted transcription factor binding sites (972 entries) [.bed coordinates](#)

Show 5 entries

Search:

Factor name	Matrix	Core Similarity Score	Matrix Similarity Score	Start Position	End Position	Sequence	Tissue / Cell Types	Reference
NF-E2	<a href="#">V\$NFE2_Q6</a>	0.932	0.892	140632576	140632591	AGGCAGCGGAGGCATG	ProEs - primary fetal liver proerythroblasts	<a href="#">GEO</a>
p53 decamer	<a href="#">V\$P53DECAMER_Q2</a>	0.964	0.905	140632585	140632594	AGGCATGGTG	keratinocytes - human primary keratinocytes	<a href="#">GEO</a>
YY1	<a href="#">V\$YY1_Q6_03</a>	0.996	0.943	140632586	140632592	GGCATGG	ESC + H1	<a href="#">GEO</a>
ER-alpha	<a href="#">V\$ERALPHA_01</a>	0.636	0.618	140632590	140632604	TGGTGCCGGTTATCT	breast tumor tissue, badoutcome	<a href="#">GEO</a>
GATA-1	<a href="#">V\$GATA1_06</a>	1.000	0.955	140632597	140632606	GGTTATCTTT	CD34+ cells - Hematopoietic early progenitors CD34 cells	<a href="#">GEO</a>

Showing 1 to 5 of 972 entries

First Previous 1 2 3 4 5 Next Last

Identifiers [what is this?](#)

Accessions mapped to this record

BIOBASE accession : PM000920123

External accessions

Affymetrix	g4557416_3p_at, 2878441, 11741519_s_at, 2878440, 11741520_x_at, 2878438, 17000793, TC05001861.hg, 2878445, X13334_at, 36661_s_at, 2878439, 201743_at, 2878443, 8114612
Agilent	A_33_P3284508, A_24_P283189
Ensembl	<a href="#">ENST00000302014</a> , <a href="#">ENST00000512545</a> , <a href="#">ENST00000401743</a> , <a href="#">ENST00000519715</a> , <a href="#">ENSG00000170458</a> , <a href="#">ENST00000498971</a>
EntrezGene	<a href="#">929</a>
Genbank	<a href="#">30583500</a> , <a href="#">AY044269</a> , <a href="#">29736</a> , <a href="#">NM_001174104</a> , <a href="#">14714728</a> , <a href="#">AF097942</a> , <a href="#">291575164</a> , <a href="#">NM_001040021</a> , <a href="#">15667228</a> , <a href="#">291575162</a> , <a href="#">NM_000591</a> , <a href="#">3983126</a> , <a href="#">91105158</a> , <a href="#">M86511</a> , <a href="#">X13334</a> , <a href="#">4557416</a> , <a href="#">BT007331</a> , <a href="#">X06882</a> , <a href="#">180020</a> , <a href="#">BC010507</a> , <a href="#">29740</a> , <a href="#">NM_001174105</a>
HGMD	<a href="#">CD14</a>
HGNC	<a href="#">CD14</a>
HumanProteinAtlas	<a href="#">ENSG00000170458</a>
Illumina	ILMN_1740015, 0000840750, ILMN_2396444
OMIM	<a href="#">158120</a>

<b>Reactome</b>	<a href="#">R-HSA-1236974</a> , <a href="#">R-HSA-168181</a> , <a href="#">R-HSA-5602498</a> , <a href="#">R-HSA-109581</a> , <a href="#">R-HSA-5686938</a> , <a href="#">R-HSA-5260271</a> , <a href="#">R-HSA-166016</a> , <a href="#">R-HSA-168249</a> , <a href="#">R-HSA-1236975</a> , <a href="#">R-HSA-166020</a> , <a href="#">R-HSA-5357801</a> , <a href="#">R-HSA-5602358</a> , <a href="#">R-HSA-181438</a> , <a href="#">R-HSA-168256</a> , <a href="#">R-HSA-1280218</a> , <a href="#">R-HSA-168898</a> , <a href="#">R-HSA-6798695</a> , <a href="#">R-HSA-1643685</a> , <a href="#">R-HSA-2562578</a> , <a href="#">R-HSA-5603041</a> , <a href="#">R-HSA-936964</a> , <a href="#">R-HSA-168188</a> , <a href="#">R-HSA-166058</a>
<b>RefSeq</b>	<a href="#">NM_000591.4</a> , <a href="#">NP_001167576.1</a> , <a href="#">NM_001040021.3</a> , <a href="#">NM_001174104.1</a> , <a href="#">NM_001174105.2</a> , <a href="#">NP_001035110.1</a> , <a href="#">NP_000582.1</a> , <a href="#">NP_001167575.1</a>
<b>UniGene</b>	<a href="#">Hs.163867</a>
<b>WikiPathways</b>	<a href="#">WP4146</a> , <a href="#">WP2877</a> , <a href="#">WP4478</a> , <a href="#">WP75</a> , <a href="#">WP4136</a> , <a href="#">WP1449</a> , <a href="#">WP51</a> , <a href="#">WP2272</a> , <a href="#">WP382</a>

**References (198)**

Show 5 entries Search:

Sl.No	PMID	Citation
111	<a href="#">29126285</a>	ReMap 2018: an updated atlas of regulatory regions from an integrative analysis of DNA-binding ChIP-seq experiments. <i>Nucleic Acids Res</i> 46 D267-D275 (2018). <a href="#">Show abstract</a>
38	<a href="#">27668798</a>	King, B, Boccalatte, F, Moran-Crusio, K, Wolf, E, Wang, J, Kayembe, C, Lazaris, C, Yu, X, Aranda-Orgilles, B, Lasorella, A, Aifantis, I, The ubiquitin ligase Huwe1 regulates the maintenance and lymphoid commitment of hematopoietic stem cells. <i>Nat Immunol</i> 17 (11) 1312-1321 (2016). <a href="#">Show abstract</a>
69	<a href="#">27460974</a>	Different promoter affinities account for specificity in MYC-dependent gene regulation. 5 (2016). <a href="#">Show abstract</a>
15	<a href="#">27402251</a>	ERRalpha mediates metabolic adaptations driving lapatinib resistance in breast cancer. 7 12156 (2016). <a href="#">Show abstract</a>
81	<a href="#">27322055</a>	RBPJ maintains brain tumor-initiating cells through CDK9-mediated transcriptional elongation. <i>J Clin Invest</i> 126 2757-2772 (2016). <a href="#">Show abstract</a>

Showing 1 to 5 of 198 entries 
[First](#) [Previous](#) [1](#) [2](#) [3](#) [4](#) [5](#) [Next](#) [Last](#)